

# The Dual Catalyst for Physical and Mental Power.

## Bio-Optimized Fuel for Human Performance

A naturally powered performance drink designed for athletes, professionals, and anyone who demands more. Naturally Sourced.

Elevate your game the natural way with **NATURA Perform Açai**, a high-performance sports-energy drink designed to fuel your body with pure, clean ingredients. Engineered for athletes and power people who demand both power and purity, our formula delivers **optimal hydration, sustained energy, and essential electrolytes**—all without artificial additives, colors, caffeine, taurine or artificial sweeteners.

## INGREDIENTS

Purified Water. **Primary Energy:** Cane Sugar, Natural Steviol Glycosides (from Stevia Leaves). **Electrolytes:** Citric Acid (from beet molasses, acidity regulator), Natural Sodium Citrate, (from citrus fruits, primary Sodium source), Calcium Lactate Gluconate 13 (Calcium Source), Natural Potassium Citrate (from molasses, beet sugar, primary potassium source), Natural Magnesium Citrate (from Citrus Fruits, primary magnesium source). **Microbial Stability:** Potassium Sorbate, Natural Color Red (Fruit Juice Color, Colored with Apple Cider Concentrate). **Flavor Masking Taste:** Natural Flavor Açai. **Vitamin, Antioxidant, Cell Protection:** Natural Tocopherol (Natural Vitamin E, d-Alpha Tocopheryl Aceta, Natural Pyridoxine hydrochloride (Vitamin B6, Protein Metabolism, RCB), Vitamin B12 Cyanocobalamin (Natural Vitamin B12, Energy, RBC)



# The Dual Catalyst for Physical and Mental Power.

## Bio-Optimized Fuel for Human Performance

A naturally powered performance drink designed for athletes, professionals, and anyone who demands more. Naturally Sourced.

**SUGGESTED RETAIL** Single | \$5.99  
12-Tray | \$143.76

### Why NATURA Perform?

- ✓ **Advanced Hydration** – A balanced blend of coconut water and mineral-rich electrolytes keeps you hydrated longer.
- ✓ **Natural Energy Boost** – Powered by organic honey, real fruit extracts, and plant-based carbohydrates for steady, crash-free energy.
- ✓ **Electrolyte Replenishment** – Sodium, potassium, and magnesium derived from natural sources support muscle function and recovery.
- ✓ **Functional Benefits** – Enhanced with antioxidant-packed superfoods like tart cherry and ginger to reduce inflammation and support endurance.
- ✓ **Clean & Transparent** – No artificial sweeteners, synthetic dyes, or GMOs—just nature's best, scientifically optimized for performance.

Whether you're hitting the gym, conquering the trails, or pushing through endurance training, working in the office, being stressed, **NATURA Perform** gives you the **strength of nature and the science of performance** in every sip.

### BAR CODE



### PRODUCT FEATURES

|                      |                             |
|----------------------|-----------------------------|
| <b>Product Name:</b> | NATURA Perform Açai         |
| <b>Abv:</b>          | Alcohol-free                |
| <b>Container:</b>    | 250ml/ 8.45 Fl oz slim can  |
| <b>Can-Material:</b> | Aluminum                    |
| <b>Label:</b>        | Can print                   |
| <b>Pallet Foil:</b>  | LDPE                        |
| <b>Pallets:</b>      | Wood pallet/ plastic pallet |

# The Dual Catalyst for Physical and Mental Power.

## Bio-Optimized Fuel for Human Performance

A naturally powered performance drink designed for athletes, professionals, and anyone who demands more. Naturally Sourced.

**Packaging Units:**

(May vary depending  
pallet type)

12 cans per tray  
121 trays/ EU-pallet  
2.904 cans/ on EU-pallet  
11 pallets/ 20" container  
23-24 pallets/ 40" container

**Packaging Weight (Tray):**

3.30 kg/ 2.21 lbs.

**Packaging Size (Tray):**

L22.2 x W16.2 x H13.7 cm  
L8.73 x W6.38 x H5.39 inch

**Manufacturer:**

Empire Spirits GmbH  
Federal Republic of Germany

**Responsible Company:**

UNC One Corp.  
3108 Sta. Barbara Blvd., Suite 105, Unit 402  
Cape Coral, FL 33914, USA

**Shelf-Life:**

<16 Months

**Storage Recommendation:**

Room temperature, cool, dry

**Product Group:**

Natural, Vegan, Kosher, non-GMO

**Artificial Preservatives:**

No

**Artificial Colors:**

No

**Artificial Flavors:**

No

### RECOMMENDED USE

Shake well. Enjoy chilled straight from the can.

#### Premium & Elegant Energizer

Replenish your energy. Perfect for recovering from physical exercise, mental strain, or general fatigue—the healthy way to revitalize body and mind.

Renew your energy the natural way.

UNITED COMPANIES ONE CORPORATION

# Endurance for Your Body. Resilience for Your Mind. **Bio-Optimized Fuel for Human Performance**

A naturally powered performance drink designed for athletes, professionals, and anyone who demands more. Naturally Sourced.

Elevate your game the natural way with **NATURA Perform Banana-Blood Orange**, a high-performance sports-energy drink designed to fuel your body with pure, clean ingredients. Engineered for athletes and power people who demand both power and purity, our formula delivers **optimal hydration, sustained energy, and essential electrolytes**—all without artificial additives, colors, caffeine, taurine or artificial sweeteners.

## INGREDIENTS

Purified Water. **Primary Energy:** Cane Sugar, Natural Steviol Glycosides (from Stevia Leaves). **Electrolytes:** Citric Acid (from beet molasses, acidity regulator), Natural Sodium Citrate, (from citrus fruits, primary Sodium source), Calcium Lactate Gluconate 13 (Calcium Source), Natural Potassium Citrate (from molasses, beet sugar, primary potassium source), Natural Magnesium Citrate (from Citrus Fruits, primary magnesium source). **Microbial Stability:** Potassium Sorbate, Natural Color Red (Fruit Juice Color, Colored with Apple Cider Concentrate). **Flavor Masking Taste:** Natural Flavor Banana, Blood Orange. **Vitamin, Antioxidant, Cell Protection:** Natural Tocopherol (Natural Vitamin E, d-Alpha Tocopheryl Aceta, Natural Pyridoxine hydrochloride (Vitamin B6, Protein Metabolism, RCB), Vitamin B12 Cyanocobalamin (Natural Vitamin B12, Energy, RBC)



# Endurance for Your Body. Resilience for Your Mind. **Bio-Optimized Fuel for Human Performance**

A naturally powered performance drink designed for athletes, professionals, and anyone who demands more. Naturally Sourced.

## SUGGESTED RETAIL

Single | \$5.99

24-Tray | \$143.76

## Why NATURA Perform?

- ✓ **Advanced Hydration** – A balanced blend of coconut water and mineral-rich electrolytes keeps you hydrated longer.
- ✓ **Natural Energy Boost** – Powered by organic honey, real fruit extracts, and plant-based carbohydrates for steady, crash-free energy.
- ✓ **Electrolyte Replenishment** – Sodium, potassium, and magnesium derived from natural sources support muscle function and recovery.
- ✓ **Functional Benefits** – Enhanced with antioxidant-packed superfoods like tart cherry and ginger to reduce inflammation and support endurance.
- ✓ **Clean & Transparent** – No artificial sweeteners, synthetic dyes, or GMOs—just nature's best, scientifically optimized for performance.

Whether you're hitting the gym, conquering the trails, or pushing through endurance training, working in the office, being stressed, **NATURA Perform** gives you the **strength of nature and the science of performance** in every sip.

## BAR CODE



## PRODUCT FEATURES

|                      |  |
|----------------------|--|
| <b>Product Name:</b> | NATURA Perform <b>Banana- Blood Orange</b> |
| <b>Abv:</b>          | Alcohol-free                               |
| <b>Container:</b>    | 250ml/ 8.45 Fl oz slim can                 |
| <b>Can-Material:</b> | Aluminum                                   |
| <b>Label:</b>        | Can print                                  |
| <b>Pallet Foil:</b>  | LDPE                                       |

# Endurance for Your Body. Resilience for Your Mind. **Bio-Optimized Fuel for Human Performance**

A naturally powered performance drink designed for athletes, professionals, and anyone who demands more. Naturally Sourced.

|  |   |
|--|---|
| <b>Pallets:</b>  | Wood pallet/ plastic pallet   |
| <b>Packaging Units:</b><br>(May vary depending<br>pallet type) | 12 cans per tray<br>121 trays/ EU-pallet<br>2,904 cans/ on EU-pallet<br>11 pallets/ 20" container<br>23-24 pallets/ 40" container |
| <b>Packaging Weight (Tray):</b>                                | 3.30 kg/ 2.21 lbs.  |
| <b>Packaging Size (Tray):</b>                                  | L22.2 x W16.2 x H13.7 cm<br>L8.73 x W6.38 x H5.39 inch  |
| <b>Manufacturer:</b>   | Empire Spirits GmbH<br>Federal Republic of Germany  |
| <b>Responsible Company:</b>                                    | UNC One Corp.<br>3108 Sta. Barbara Blvd., Suite 105, Unit 402<br>Cape Coral, FL 33914, USA  |
| <b>Shelf-Life:</b>   | <16 Months  |
| <b>Storage Recommendation:</b>                                 | Room temperature, cool, dry   |

**Product Group:** Natural, Vegan, Kosher, non-GMO

**Artificial Preservatives:** No

**Artificial Colors:** No

**Artificial Flavors:** No

## RECOMMENDED USE

Shake well. Enjoy chilled straight from the can.

### Premium & Elegant Energizer

Replenish your energy. Perfect for recovering from physical exercise, mental strain, or general fatigue—the healthy way to revitalize body and mind.

Renew your energy the natural way.

UNITED COMPANIES ONE CORPORATION

# The Dual Catalyst for Physical and Mental Power

## Bio-Optimized Fuel for Human Performance

A naturally powered performance drink designed for athletes, professionals, and anyone who demands more. Naturally Sourced.

Elevate your game the natural way with **NATURA Perform Lychee**, a high-performance sports-energy drink designed to fuel your body with pure, clean ingredients. Engineered for athletes and power people who demand both power and purity, our formula delivers **optimal hydration, sustained energy, and essential electrolytes**—all without artificial additives, colors, caffeine, taurine or artificial sweeteners.

## INGREDIENTS

Purified Water. **Primary Energy:** Cane Sugar, Natural Steviol Glycosides (from Stevia Leaves). **Electrolytes:** Citric Acid (from beet molasses, acidity regulator), Natural Sodium Citrate, (from citrus fruits, primary Sodium source), Calcium Lactate Gluconate 13 (Calcium Source), Natural Potassium Citrate (from molasses, beet sugar, primary potassium source), Natural Magnesium Citrate (from Citrus Fruits, primary magnesium source). **Microbial Stability:** Potassium Sorbate, Natural Color Red (Fruit Juice Color, Colored with Apple Cider Concentrate). **Flavor Masking Taste:** Natural Flavor Lychee. **Vitamin, Antioxidant, Cell Protection:** Natural Tocopherol (Natural Vitamin E, d-Alpha Tocopheryl Aceta, Natural Pyridoxine hydrochloride (Vitamin B6, Protein Metabolism, RCB), Vitamin B12 Cyanocobalamin (Natural Vitamin B12, Energy, RBC)



# The Dual Catalyst for Physical and Mental Power

## Bio-Optimized Fuel for Human Performance

A naturally powered performance drink designed for athletes, professionals, and anyone who demands more. Naturally Sourced.

**SUGGESTED RETAIL** Single | \$5.99  
24-Tray | \$143.76

### Why NATURA Perform?

- ✓ **Advanced Hydration** – A balanced blend of coconut water and mineral-rich electrolytes keeps you hydrated longer.
- ✓ **Natural Energy Boost** – Powered by organic honey, real fruit extracts, and plant-based carbohydrates for steady, crash-free energy.
- ✓ **Electrolyte Replenishment** – Sodium, potassium, and magnesium derived from natural sources support muscle function and recovery.
- ✓ **Functional Benefits** – Enhanced with antioxidant-packed superfoods like tart cherry and ginger to reduce inflammation and support endurance.
- ✓ **Clean & Transparent** – No artificial sweeteners, synthetic dyes, or GMOs—just nature's best, scientifically optimized for performance.

Whether you're hitting the gym, conquering the trails, or pushing through endurance training, working in the office, being stressed, **NATURA Perform** gives you the **strength of nature and the science of performance** in every sip.

### BAR CODE



### PRODUCT FEATURES

|                      |                              |
|----------------------|------------------------------|
| <b>Product Name:</b> | NATURA Perform <b>Lychee</b> |
| <b>Abv:</b>          | Alcohol-free                 |
| <b>Container:</b>    | 250ml/ 8.45 Fl oz slim can   |
| <b>Can-Material:</b> | Aluminum                     |
| <b>Label:</b>        | Can print                    |
| <b>Pallet Foil:</b>  | LDPE                         |
| <b>Pallets:</b>      | Wood pallet/ plastic pallet  |

# The Dual Catalyst for Physical and Mental Power

## Bio-Optimized Fuel for Human Performance

A naturally powered performance drink designed for athletes, professionals, and anyone who demands more. Naturally Sourced.

**Packaging Units:**

(May vary depending  
pallet type)

12 cans per tray  
121 trays/ EU-pallet  
2.904 cans/ on EU-pallet  
11 pallets/ 20" container  
23-24 pallets/ 40" container

**Packaging Weight (Tray):**

3.30 kg/ 2.21 lbs.

**Packaging Size (Tray):**

L22.2 x W16.2 x H13.7 cm  
L8.73 x W6.38 x H5.39 inch

**Manufacturer:**

Empire Spirits GmbH  
Federal Republic of Germany

**Responsible Company:**

UNC One Corp.  
3108 Sta. Barbara Blvd., Suite 105, Unit 402  
Cape Coral, FL 33914, USA

**Shelf-Life:**

<16 Months

**Storage Recommendation:**

Room temperature, cool, dry

**Product Group:**

Natural, Vegan, Kosher, non-GMO

**Artificial Preservatives:**

No

**Artificial Colors:**

No

**Artificial Flavors:**

No

### RECOMMENDED USE

Shake well. Enjoy chilled straight from the can.

#### Premium & Elegant Energizer

Replenish your energy. Perfect for recovering from physical exercise, mental strain, or general fatigue—the healthy way to revitalize body and mind.

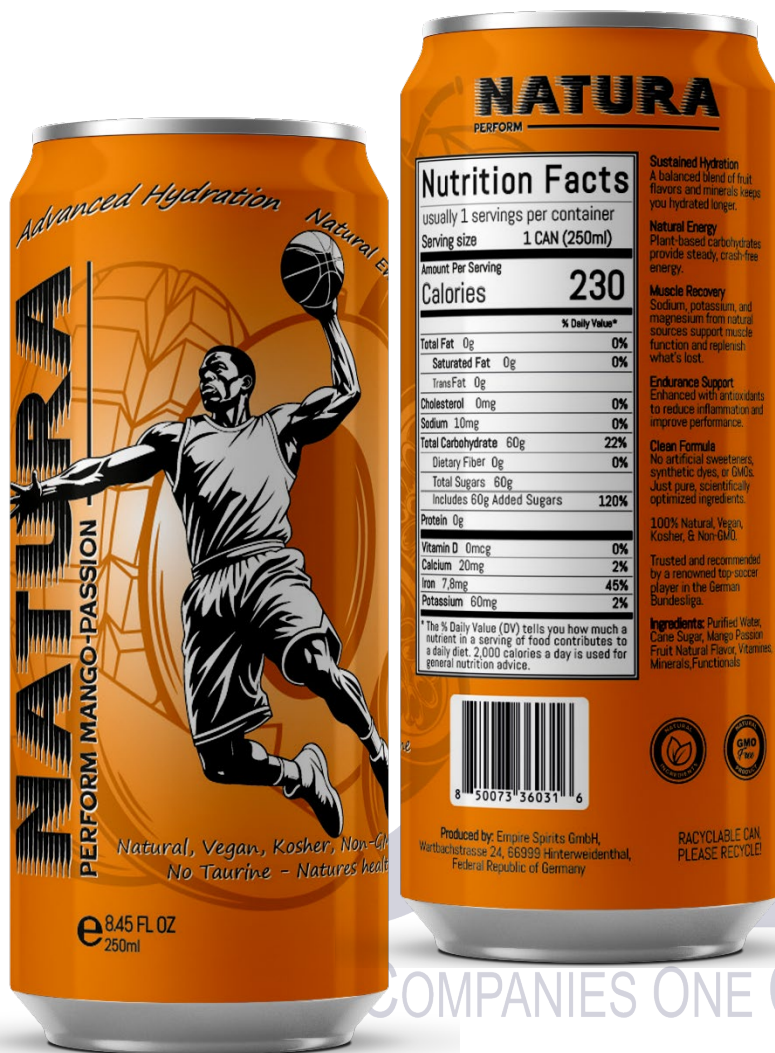
Renew your energy the natural way.

UNITED COMPANIES ONE CORPORATION

# Sustained Energy for Muscles. Unwavering Focus Your Mind. **Bio-Optimized Fuel for Human Performance**

A naturally powered performance drink designed for athletes, professionals, and anyone who demands more. Naturally Sourced.

Elevate your game the natural way with **NATURA Perform Mango-Passion**, a high-performance sports-energy drink designed to fuel your body with pure, clean ingredients. Engineered for athletes and power people who demand both power and purity, our formula delivers **optimal hydration, sustained energy, and essential electrolytes**—all without artificial additives, colors, caffeine, taurine or artificial sweeteners.



## INGREDIENTS

Purified Water. **Primary Energy:** Cane Sugar, Natural Steviol Glycosides (from Stevia Leaves). **Electrolytes:** Citric Acid (from beet molasses, acidity regulator), Natural Sodium Citrate, (from citrus fruits, primary Sodium source), Calcium Lactate Gluconate 13 (Calcium Source), Natural Potassium Citrate (from molasses, beet sugar, primary potassium source), Natural Magnesium Citrate (from Citrus Fruits, primary magnesium source). **Microbial Stability:** Potassium Sorbate, Natural Color Red (Fruit Juice Color, Colored with Apple Cider Concentrate). **Flavor Masking Taste:** Natural Flavor Mango, Passion Fruit **Vitamin, Antioxidant, Cell Protection:** Natural Tocopherol (Natural Vitamin E, d-Alpha Tocopheryl Aceta, Natural Pyridoxine hydrochloride (Vitamin B6, Protein Metabolism, RCB), Vitamin B12 Cyanocobalamin (Natural Vitamin B12, Energy, RBC)

# Sustained Energy for Muscles. Unwavering Focus Your Mind. **Bio-Optimized Fuel for Human Performance**

A naturally powered performance drink designed for athletes, professionals, and anyone who demands more. Naturally Sourced.

**SUGGESTED RETAIL** Single | \$5.99  
24-Tray | \$143.76

## Why NATURA Perform?

- ✓ **Advanced Hydration** – A balanced blend of coconut water and mineral-rich electrolytes keeps you hydrated longer.
- ✓ **Natural Energy Boost** – Powered by organic honey, real fruit extracts, and plant-based carbohydrates for steady, crash-free energy.
- ✓ **Electrolyte Replenishment** – Sodium, potassium, and magnesium derived from natural sources support muscle function and recovery.
- ✓ **Functional Benefits** – Enhanced with antioxidant-packed superfoods like tart cherry and ginger to reduce inflammation and support endurance.
- ✓ **Clean & Transparent** – No artificial sweeteners, synthetic dyes, or GMOs—just nature's best, scientifically optimized for performance.

Whether you're hitting the gym, conquering the trails, or pushing through endurance training, working in the office, being stressed, **NATURA Perform** gives you the **strength of nature and the science of performance** in every sip.

## BAR CODE



## PRODUCT FEATURES

|                      |                                     |
|----------------------|-------------------------------------|
| <b>Product Name:</b> | NATURA Perform <b>Mango-Passion</b> |
| <b>Abv:</b>          | Alcohol-free                        |
| <b>Container:</b>    | 250ml/ 8.45 Fl oz slim can          |
| <b>Can-Material:</b> | Aluminum                            |
| <b>Label:</b>        | Can print                           |
| <b>Pallet Foil:</b>  | LDPE                                |
| <b>Pallets:</b>      | Wood pallet/ plastic pallet         |

# Sustained Energy for Muscles. Unwavering Focus Your Mind. **Bio-Optimized Fuel for Human Performance**

A naturally powered performance drink designed for athletes, professionals, and anyone who demands more. Naturally Sourced.

|  |   |
|--|---|
| <b>Packaging Units:</b><br>(May vary depending<br>pallet type) | 12 cans per tray<br>121 trays/ EU-pallet<br>2.904 cans/ on EU-pallet<br>11 pallets/ 20" container<br>23-24 pallets/ 40" container |
| <b>Packaging Weight (Tray):</b>                                | 3.30 kg/ 2.21 lbs.  |
| <b>Packaging Size (Tray):</b>                                  | L22.2 x W16.2 x H13.7 cm<br>L8.73 x W6.38 x H5.39 inch  |
| <b>Manufacturer:</b>   | Empire Spirits GmbH<br>Federal Republic of Germany  |
| <b>Responsible Company:</b>                                    | UNC One Corp.<br>3108 Sta. Barbara Blvd., Suite 105, Unit 402<br>Cape Coral, FL 33914, USA  |
| <b>Shelf-Life:</b>   | <16 Months  |
| <b>Storage Recommendation:</b>                                 | Room temperature, cool, dry   |

**Product Group:** Natural, Vegan, Kosher, non-GMO

**Artificial Preservatives:** No

**Artificial Colors:** No

**Artificial Flavors:** No

## RECOMMENDED USE

Shake well. Enjoy chilled straight from the can.

### Premium & Elegant Energizer

Replenish your energy. Perfect for recovering from physical exercise, mental strain, or general fatigue—the healthy way to revitalize body and mind.

Renew your energy the natural way.

UNITED COMPANIES ONE CORPORATION

# The Next Evolution in Performance Nutrition: For Mind and Body. **Bio-Optimized Fuel for Human Performance**

A naturally powered performance drink designed for athletes, professionals, and anyone who demands more. Naturally Sourced.

Elevate your game the natural way with **NATURA Perform Pink Grape**, a high-performance sports-energy drink designed to fuel your body with pure, clean ingredients. Engineered for athletes and power people who demand both power and purity, our formula delivers **optimal hydration, sustained energy, and essential electrolytes**—all without artificial additives, colors, caffeine, taurine or artificial sweeteners.

## INGREDIENTS

Purified Water. **Primary Energy:** Cane Sugar, Natural Steviol Glycosides (from Stevia Leaves). **Electrolytes:** Citric Acid (from beet molasses, acidity regulator), Natural Sodium Citrate, (from citrus fruits, primary Sodium source), Calcium Lactate Gluconate 13 (Calcium Source), Natural Potassium Citrate (from molasses, beet sugar, primary potassium source), Natural Magnesium Citrate (from Citrus Fruits, primary magnesium source). **Microbial Stability:** Potassium Sorbate, Natural Color Red (Fruit Juice Color, Colored with Apple Cider Concentrate). **Flavor Masking Taste:** Natural Flavor Grape. **Vitamin, Antioxidant, Cell Protection:** Natural Tocopherol (Natural Vitamin E, d-Alpha Tocopheryl Aceta, Natural Pyridoxine hydrochloride (Vitamin B6, Protein Metabolism, RCB), Vitamin B12 Cyanocobalamin (Natural Vitamin B12, Energy, RBC)



# The Next Evolution in Performance Nutrition: For Mind and Body. **Bio-Optimized Fuel for Human Performance**

A naturally powered performance drink designed for athletes, professionals, and anyone who demands more. Naturally Sourced.

**SUGGESTED RETAIL** Single | \$5.99  
24-Tray | \$143.76

## Why NATURA Perform?

- ✓ **Advanced Hydration** – A balanced blend of coconut water and mineral-rich electrolytes keeps you hydrated longer.
- ✓ **Natural Energy Boost** – Powered by organic honey, real fruit extracts, and plant-based carbohydrates for steady, crash-free energy.
- ✓ **Electrolyte Replenishment** – Sodium, potassium, and magnesium derived from natural sources support muscle function and recovery.
- ✓ **Functional Benefits** – Enhanced with antioxidant-packed superfoods like tart cherry and ginger to reduce inflammation and support endurance.
- ✓ **Clean & Transparent** – No artificial sweeteners, synthetic dyes, or GMOs—just nature's best, scientifically optimized for performance.

Whether you're hitting the gym, conquering the trails, or pushing through endurance training, working in the office, being stressed, **NATURA Perform** gives you the **strength of nature and the science of performance** in every sip.

## BAR CODE



## PRODUCT FEATURES

|                      |                                  |
|----------------------|----------------------------------|
| <b>Product Name:</b> | NATURA Perform <b>Pink Grape</b> |
| <b>AbV:</b>          | Alcohol-free                     |
| <b>Container:</b>    | 250ml/ 8.45 Fl oz slim can       |
| <b>Can-Material:</b> | Aluminum                         |
| <b>Label:</b>        | Can print                        |
| <b>Pallet Foil:</b>  | LDPE                             |
| <b>Pallets:</b>      | Wood pallet/ plastic pallet      |

# The Next Evolution in Performance Nutrition: For Mind and Body. **Bio-Optimized Fuel for Human Performance**

A naturally powered performance drink designed for athletes, professionals, and anyone who demands more. Naturally Sourced.

**Packaging Units:**

(May vary depending  
pallet type)

12 cans per tray  
121 trays/ EU-pallet  
2.904 cans/ on EU-pallet  
11 pallets/ 20" container  
23-24 pallets/ 40" container

**Packaging Weight (Tray):**

3.30 kg/ 2.21 lbs.

**Packaging Size (Tray):**

L22.2 x W16.2 x H13.7 cm  
L8.73 x W6.38 x H5.39 inch

**Manufacturer:**

Empire Spirits GmbH  
Federal Republic of Germany

**Responsible Company:**

UNC One Corp.  
3108 Sta. Barbara Blvd., Suite 105, Unit 402  
Cape Coral, FL 33914, USA

**Shelf-Life:**

<16 Months

**Storage Recommendation:**

Room temperature, cool, dry

**Product Group:**

Natural, Vegan, Kosher, non-GMO

**Artificial Preservatives:**

No

**Artificial Colors:**

No

**Artificial Flavors:**

No

## RECOMMENDED USE

Shake well. Enjoy chilled straight from the can.

### Premium & Elegant Energizer

Replenish your energy. Perfect for recovering from physical exercise, mental strain, or general fatigue—the healthy way to revitalize body and mind.

Renew your energy the natural way.

UNITED COMPANIES ONE CORPORATION

# The First True Hydration for Physical & Cognitive Power. Bio-Optimized Fuel for Human Performance

A naturally powered performance drink designed for athletes, professionals, and anyone who demands more. Naturally Sourced.

Elevate your game the natural way with **NATURA Perform Pomegranate**, a high-performance sports-energy drink designed to fuel your body with pure, clean ingredients. Engineered for athletes and power people who demand both power and purity, our formula delivers **optimal hydration, sustained energy, and essential electrolytes**—all without artificial additives, colors, caffeine, taurine or artificial sweeteners.

## INGREDIENTS

Purified Water. **Primary Energy:** Cane Sugar, Natural Steviol Glycosides (from Stevia Leaves). **Electrolytes:** Citric Acid (from beet molasses, acidity regulator), Natural Sodium Citrate, (from citrus fruits, primary Sodium source), Calcium Lactate Gluconate 13 (Calcium Source), Natural Potassium Citrate (from molasses, beet sugar, primary potassium source), Natural Magnesium Citrate (from Citrus Fruits, primary magnesium source). **Microbial Stability:** Potassium Sorbate, Natural Color Red (Fruit Juice Color, Colored with Apple Cider Concentrate). **Flavor Masking Taste:** Natural Flavor Pomegranate. **Vitamin, Antioxidant, Cell Protection:** Natural Tocopherol (Natural Vitamin E, d-Alpha Tocopheryl Aceta, Natural Pyridoxine hydrochloride (Vitamin B6, Protein Metabolism, RCB), Vitamin B12 Cyanocobalamin (Natural Vitamin B12, Energy, RBC)



# The First True Hydration for Physical & Cognitive Power. Bio-Optimized Fuel for Human Performance

A naturally powered performance drink designed for athletes, professionals, and anyone who demands more. Naturally Sourced.

**SUGGESTED RETAIL** Single | \$5.99  
24-Tray | \$143.76

## Why NATURA Perform?

- ✓ **Advanced Hydration** – A balanced blend of coconut water and mineral-rich electrolytes keeps you hydrated longer.
- ✓ **Natural Energy Boost** – Powered by organic honey, real fruit extracts, and plant-based carbohydrates for steady, crash-free energy.
- ✓ **Electrolyte Replenishment** – Sodium, potassium, and magnesium derived from natural sources support muscle function and recovery.
- ✓ **Functional Benefits** – Enhanced with antioxidant-packed superfoods like tart cherry and ginger to reduce inflammation and support endurance.
- ✓ **Clean & Transparent** – No artificial sweeteners, synthetic dyes, or GMOs—just nature's best, scientifically optimized for performance.

Whether you're hitting the gym, conquering the trails, or pushing through endurance training, working in the office, being stressed, **NATURA Perform** gives you the **strength of nature and the science of performance** in every sip.

## BAR CODE



## PRODUCT FEATURES

|                      |                                   |
|----------------------|-----------------------------------|
| <b>Product Name:</b> | NATURA Perform <b>Pomegranate</b> |
| <b>Abv:</b>          | Alcohol-free                      |
| <b>Container:</b>    | 250ml/ 8.45 Fl oz slim can        |
| <b>Can-Material:</b> | Aluminum                          |
| <b>Label:</b>        | Can print                         |
| <b>Pallet Foil:</b>  | LDPE                              |
| <b>Pallets:</b>      | Wood pallet/ plastic pallet       |

# The First True Hydration for Physical & Cognitive Power. Bio-Optimized Fuel for Human Performance

A naturally powered performance drink designed for athletes, professionals, and anyone who demands more. Naturally Sourced.

|  |   |
|--|---|
| <b>Packaging Units:</b><br>(May vary depending<br>pallet type) | 12 cans per tray<br>121 trays/ EU-pallet<br>2.904 cans/ on EU-pallet<br>11 pallets/ 20" container<br>23-24 pallets/ 40" container |
| <b>Packaging Weight (Tray):</b>                                | 3.30 kg/ 2.21 lbs.  |
| <b>Packaging Size (Tray):</b>                                  | L22.2 x W16.2 x H13.7 cm<br>L8.73 x W6.38 x H5.39 inch  |
| <b>Manufacturer:</b>   | Empire Spirits GmbH<br>Federal Republic of Germany  |
| <b>Responsible Company:</b>                                    | UNC One Corp.<br>3108 Sta. Barbara Blvd., Suite 105, Unit 402<br>Cape Coral, FL 33914, USA  |
| <b>Shelf-Life:</b>   | <16 Months  |
| <b>Storage Recommendation:</b>                                 | Room temperature, cool, dry   |

**Product Group:** Natural, Vegan, Kosher, non-GMO

**Artificial Preservatives:** No

**Artificial Colors:** No

**Artificial Flavors:** No

## RECOMMENDED USE

Shake well. Enjoy chilled straight from the can.

### Premium & Elegant Energizer

Replenish your energy. Perfect for recovering from physical exercise, mental strain, or general fatigue—the healthy way to revitalize body and mind.

Renew your energy the natural way.

UNITED COMPANIES ONE CORPORATION